

# City of Laguna Beach

## 7th Annual

# ARTIST OPEN STUDIOS

Rt. 133



Laguna Canyon Rd

5

4

3

2

1

Ebrahim Amin  
Cynthia Britain  
Elizabeth Bridy  
Elaine Cohen  
Judi Smolin  
Marianne Champlin  
Hedy Buzan  
Tom Swimm  
Sheryl Seltzer  
Deborah Weinstein  
Veronica Khristov  
Michael Situ  
Lani Emanuel  
Cheyne Walls  
Linda Ames  
Susan Wills  
Paul Gardner  
**5 YOUNG+EATON**

**4 Muffin Spencer-Devlin**  
Sandy Groves  
John Barber

**3 Maggie Spencer**

Casey Parlette  
Tom Lamb  
Michael Ezzell  
**2 Marlo Bartels**

**1 John Repka**

*No Shuttle Service*

**419 Ocean Ave Cliff Wassmann**

**1550 South CH Lydia Delgado**

**?**

Blue squares are locations for each Artist Studio group. Numbers represent Shuttle Stops

The shuttles run approximately every 15 minutes

**LCR - Laguna Canyon Rd**

Forest Ave

This program is funded by the lodging establishments and City of Laguna Beach



ACT V  
**FREE**  
Parking &  
Shuttle  
Service  
1900  
Laguna  
Canyon Rd



# Studio Tour Dates

## October 17 & 18, 2015

## March 19 & 20, 2016

### 11am to 5 pm

info: 949.497.0722

art@lagunabeachcity.net

Artist Open Studios is a celebration of Laguna's thriving visual arts community. It is not only a fantastic opportunity to see, buy or commission art, it is also an adventure and exploration of an iconic artist colony – a time to uncover new talent and rediscover established artists. Who could resist the chance to step into the heart of where art is created, to experience something unique, something you just can't see anywhere else?



### Lydia Delgado

1550 S Coast Hwy • (949) 235-9922

[delgadowatercolor.com](http://delgadowatercolor.com)

#### Painting

Lydia Delgado's watercolor painting style is a celebration of nature. From the desert to the garden, each piece is individually designed and evokes a sense of style, grace and appreciation of timeless beauty.

### Cliff Wassmann

419 Ocean Avenue • (949) 291-6718

[artseek.com](http://artseek.com)

#### Photography and Oil Paintings

Working from a historic Laguna Beach cottage studio, Wassmann creates oils of both local views as well as the desert southwest. His paintings are based on photos that are also on display.



### John Repka

2185 LCR, Studio B-3 • (949) 338-0833

[johnrepka.com](http://johnrepka.com)

#### Oil Painting and Sculpture

Painting and sculpting with wood, my art uses the evolving "isms" of modern art and cultural history and creates art that is new and eternal. My perfect piece of art strives to be expression, impression, abstract, realist, pop, etc.

### Marlo Bartels

2307 LCR, Studio 7 • (949) 494-4408

[marlobartels.com](http://marlobartels.com)

#### Ceramics

Marlo has been producing and installing permanent wall pieces, sculpture, murals and functional art since 1977. He works with ceramic tile, terrazzo & stone; shaping, forming and glazing the clay elements by hand



### Michael Ezzell

2307 LCR, Studio 8 • (949) 246-4001

[michaeezzell.com](http://michaeezzell.com)

#### Ceramics and Mixed Media

"My work is a recording of my vision of a time and a place. It is my life; where I have been and where I am going. It does not have to be of this world. It is for others to interpret as to how it relates to them. Or not."



### Tom Lamb

2037 LCR, Studio C • (949) 494-0264

[lambstudio.com](http://lambstudio.com)

#### Photography

Tom is an aerial, architectural, landscape and ethnographic, panoramic and interpretive photographer. He has dedicated his life to not only creating, but also championing environmental awareness.



### Casey Parlette

2037 LCR, Studio 9 • (949) 812-2916

[caseyparlette.com](http://caseyparlette.com)

#### Sculpture. Wildlife in Wood, Metal and Stone

A naturalist at heart and in practice, Casey's world adventures and studies have engendered and influenced his art. "Nature is the ultimate teacher. Using wood, metal and stone I strive to capture the lessons I have learned."



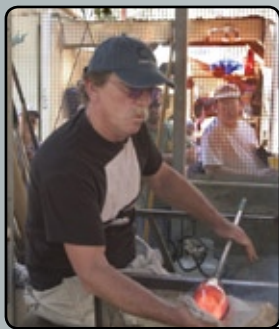
### Maggie Spencer

2707 LCR • (714) 264-5617

[maggiespencer.com](http://maggiespencer.com)

#### Kiln-Formed Glass

Kiln-formed glass features vibrant colors and dynamic shapes. Unique art work includes wall sculpture, platters and bowls, candle holders, and more.



## John Barber

21062 LCR • (949) 494-1464

[johnbarberglassdesigns.com](http://johnbarberglassdesigns.com)

### Glass Blower

Master glass blower.

## Muffin Spencer-Devlin

21062 LCR • (949) 701-2286

[muffinsspencerdevlin.com](http://muffinsspencerdevlin.com)

### Blown Glass

"I make blown glass vessels in the brightest colors I can find."



## Cynthia Britain

3251 LCR Studio A-4 • (949) 494-8698

[cynthiabritain.com](http://cynthiabritain.com)

### Oil Paintings

I am an impressionist painter, painting in the 'plein air' tradition. California landscapes, seascapes and figurative works available. I also create commissioned works on request.



## Elizabeth Bridy

3251 LCR Studio B-1 • (646) 265-3971

[elizabethbourgeoisart.com](http://elizabethbourgeoisart.com)

### Mixed Media

Unabridged, unapologetic and introspective interpretation like a page from an artist diary. Spirited strokes, found materials and personal words. An invitation to consider one's own vulnerabilities.



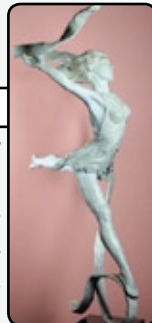
## Elaine Cohen

3251 LCR Studio B-2 • (818) 943-9378

[elainecohen.com](http://elainecohen.com)

### Bronze Sculpture & Mixed Media Painting

"My sculpture is figurative and lifelike, created with emotional emphasis. My paintings are abstracts with complexity and vivid as well as soothing colors and themes." All original works.



## Judi Smolin

3251 LCR Studio B-3 • (714) 731-5545

[Judi.smolin@gmail.com](mailto:Judi.smolin@gmail.com)

### Oil, Mixed Media, Sculpture

"I absolutely love painting animals. The eyes speak to me, and with each stroke of the brush I feel their life. The abstracts are expressions of my love for movement, color and grace."



## Sandy Groves

21022 LCR • (949) 280-2202

[sandygroves.com](http://sandygroves.com)

### Clay and Wood

Wood and Clay combined into functional, sculptural, and bas relief pieces.



## Marianne Champlin

3251 LCR Studio C-1 • (760) 580-0153

[mariannechamplin@msn.com](mailto:mariannechamplin@msn.com)

### Painting

Impressionist Artist working in Oil, Watercolor and Egg Tempera. "I have recently moved to Laguna Beach from North East San Diego County, having painted on location where many early California Artists worked." Currently working on undersea egg tempera pieces.



## Ebrahim Amin

3251 LCR Studio A-2 • (949) 395-8161

[aminart.com](http://aminart.com)

### Oil

Plein Air style outside and studio painting in categories: Landscape, Seascape, Portrait and Still-Life with over 45 years of experience.



## Hedy Buzan

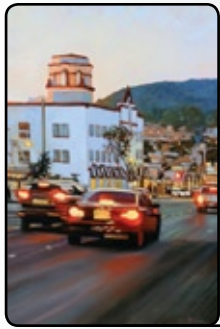
3251 LCR Studio C • (949) 293-3191

[hedybuzan.com](http://hedybuzan.com)

### Printmaking, Painting and Collage

"My work has been described as visual poetry. I start by coloring and texturing papers using monotype printmaking techniques which I combine, paint over and add to until a concept emerges."





## Tom Swimm

3251 LCR Studio E • (949) 715-1705

[tomswimmfineart.com](http://tomswimmfineart.com)

### **Oil, Acrylic and Watercolor**

"Light is the most important aspect of my work, offering the ultimate challenge and reward. To capture it's elusive qualities on canvas offers great personal satisfaction, and it's what I thrive on artistically."

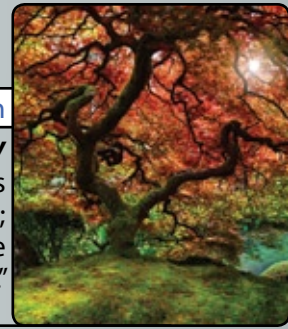
## Cheyne Walls

3251 LCR Studio H-5 • (949) 370-5643

[cheynewalls.com](http://cheynewalls.com)

### **Photography**

Fine Art Landscape Photographs  
"Mother Nature stages the performance; it's my passion to capture those moments."



## Sheryl Seltzer

3251 LCR Studio F-4 • (949) 436-0522

[sherylsmithseltzer.com](http://sherylsmithseltzer.com)

### **Painting and Printmaking**

Large format woodcuts, monotypes, monoprints and oil paintings are contemporary interpretations of all things natural.



## Linda Ames

3251 LCR Studio I-2 • (949) 395-6003

[lindaamesstudio.com](http://lindaamesstudio.com)

### **Metalsmith, Sculptural Art Jewelry**

Tidepool inspired designs, woven jewels and lost wax cast original wearable art.



## Deborah Weinstein

3251 LCR Studio F-5 • (847) 204-8678

[deborahweinstein.com](http://deborahweinstein.com)

### **Oil and Charcoal**

Figurative drawings and paintings.

## Susan Wills

3275 LCR Studio L-2 • (949) 246-7185

[susanwills.com](http://susanwills.com)

### **Ceramics**

Creating decorative and colorful hand built ceramics in stoneware.



## Veronica Khristov

3251 LCR Studio G-6 • (949) 293-4646

[veronicakhristov.com](http://veronicakhristov.com)

### **Oil on Canvas**

Veronica Khristov's plein-air landscape and figure painting is influenced by the impressionist and the Art Nouveau movement in Europe. Her travel offers her a wide variety of subjects and nothing makes her happier than to have a brush in her hand.



## Paul Gardner

3275 LCR Studio M-1 • (949) 300-3993

[paulgardnerfineart.com](http://paulgardnerfineart.com)

### **Mixed Media Paintings**

"My work continues to move the image beyond traditional landscape to reveal the endless wonders the earth manifests in my latest mixed media paintings. I explore themes relating to the ocean, geology and Buddhist thought."



## Michael Situ

3251 LCR Studio H-3 • (949) 294-0720

[michaelsitu.com](http://michaelsitu.com)

### **Painting**

Michael Situ is a nationally recognized artist in the United States. An award winning artist, he is a signature member of Oil Painters of America, California Art Club, Laguna Plein Air Painters Association and American Impressionist Society.

## YOUNG+EATON

3275 LCR Studio N-1 • (949) 497-7849

[youngeaton.com](http://youngeaton.com)

### **Art on Steel**

"When we discovered a process working with metal, we loved the natural aspects and experimental qualities that working with the material afforded us. The result is a melding of organic, fluid and highly original work of abstract art." Phil Eaton



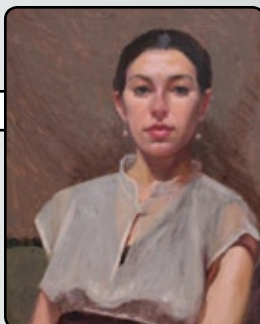
## Lani Emanuel

3251 LCR Studio H-4 • (949) 715-1778

[laniemanuel.com](http://laniemanuel.com)

### **Oil Paintings**

"I create traditional oil paintings en plein-aire and in studio. Subjects include portraits/figure, landscape/seascape and still life." Commissions welcomed.



*A project of  
the City of Laguna Beach Arts Commission.  
Thank you to all participating artists, the  
lodging establishments  
And City of Laguna Beach.*